

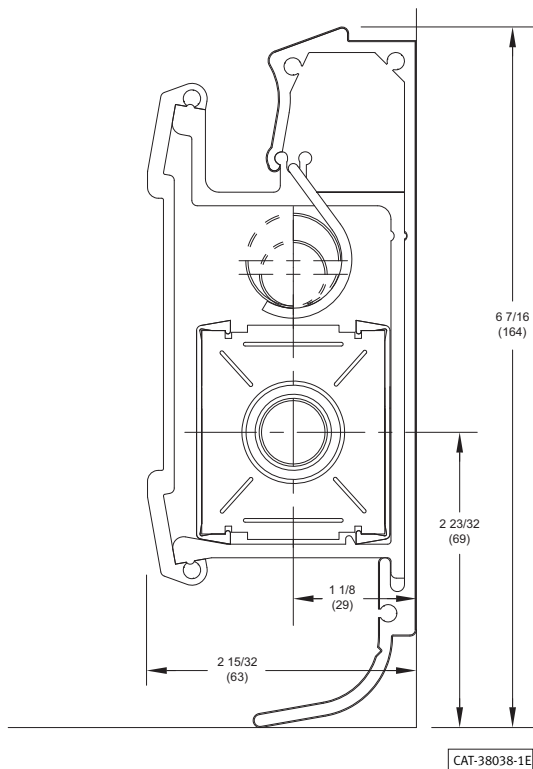
*DesignLine*  
**ELEGANCE™**



**DESIGNED TO LAST  
FOREVER...**

with class and style in bathrooms,  
kitchens and everywhere else.

## DIMENSIONAL DATA



## FEATURES

- Made of rust-proof, corrosion resistant extruded aluminum.
- Available in white or tan color.
- Durable 10 GA. cover, with 8 GA. brackets.
- Die cast aluminum accessories with locking pins for secure fit.

## RATINGS

BTUH PER LINEAL FOOT OF ACTIVE LENGTH AT AVERAGE WATER TEMPERATURES INDICATED °F  
DL-500 Assembled with 1/2" Element

FLOW RATE (GPM)	150°	160°	170°	180°	190°	200°
4	270	320	370	420	470	520
1	260	300	350	400	440	490

RATING AND PRESSURE DROPS AT VARIOUS FLOW RATES

GPM	1.0	1.5	2.0	2.5	3.0
Lb. per Hr.	500	750	1,000	1,250	1,500
I = B = R Factor to obtain rating at given flow	1,000	1,016	1,028	1,038	1,045
DL-500 Element - P.D. Milinches Per Ft.	260	520	850	1,270	1,730



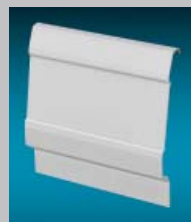
End Cap



Inside Corner



Wall Trim



Wall Trim to Floor

## ACCESSORIES

DESCRIPTION	CATALOG NUMBER	MASTER CARTON QTY.
End Cap - Left Hand	D-EL	1
End Cap - Right Hand	D-ER	1
Inside Corner - 90°	D-IC	1
Wall Trim - 2"	D-WT2	1
Wall Trim - 4"	D-WT4	1
Wall Trim to Floor - 4"	D-WTF4	1
Wall Trim to Floor - 6"	D-WTF6	1
Access Panel - 4"	D-AP4	1
Access Panel - 6"	D-AP6	1
Return Pipe Hangers	D-PH	1
Outside and Special Angle Corners	CONSULT FACTORY	

*DesignLine*

260 North Elm Street, Westfield, MA 01085  
Tel: (413) 564-5545 Fax: (413) 572-3764

7555 Tranmere Drive, Mississauga, Ontario, L5S 1L4 Canada  
Tel: (905) 672-2991 Fax: (905) 672-2883



www.designlineonline.com



DLB-3